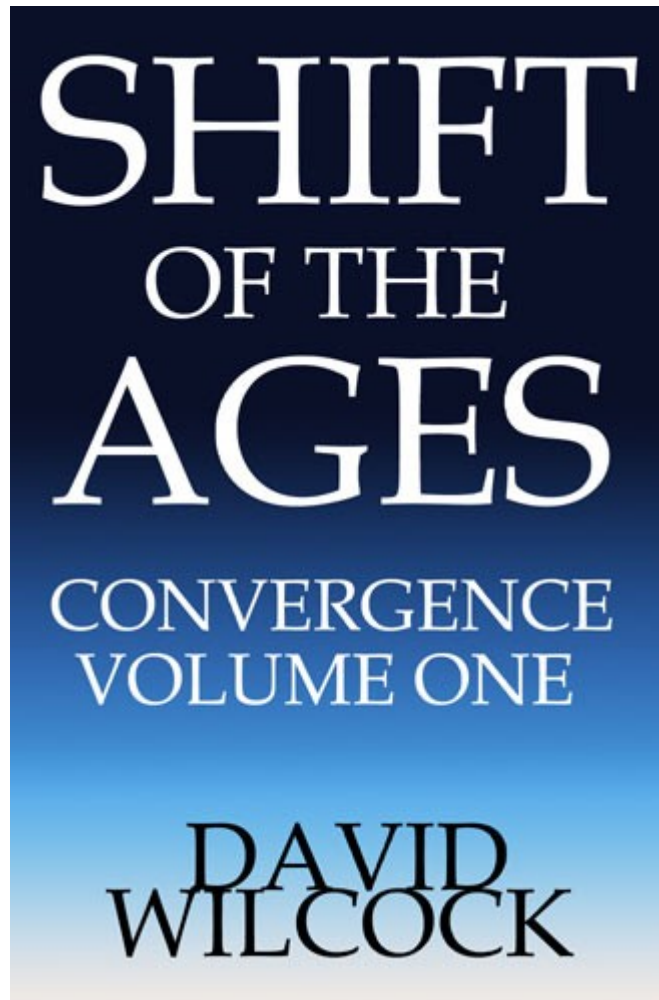


THE SHIFT OF THE AGES, CHAPTER 14: GREAT CYCLE, GLOBAL GRID AND HD PHYSICS: HISTORICAL PERSPECTIVE



In this chapter we discuss the idea of secret societies having preserved knowledge from Atlantis regarding these planetary cycles and grid formations, as well as the entire field of harmonic physics in general.

By examining little-known facts such as the United Nations Meditation Room mural and symbols and writings on the obverse side of the Great Seal of the United States, we begin to see how these secret societies still persist, and apparently have a working knowledge of many principles we have explored in this book.

We then explore the discoveries of Paulina Zelitsky, who may well have discovered a treasure trove of artifacts from Atlantis. Despite some degree of publicity, these outrageous findings have not been publicized for the outside world.

We will also feature some intriguing, never-before-seen witness testimony suggesting w

information is still being suppressed.

Our objective in chapter 12 was to show how the Becker / Hagens grid "cracks the code" on planetary energy systems that we have been going through.

We now can see quite clearly how the combined effects of all the dimensional frequencies and their geometric counterparts affect our physical sphere.

In this grid, everyone is satisfied, from Hoagland and his tetrahedron to Cathie and his octahedron, to Sanderson and his icosahedron and the Russians with their icosahedron / dodecahedron.

Now that we have seen beyond any reasonable doubt that this grid exists, it also makes one wonder what others would have known about it before. This would be especially true with the existence of an advanced technological society such as Atlantis or Lemuria.

A whole new area of inquiry stems out of this, and it involves looking back to the past. The lines and vortices have powerful effects on human consciousness as well as gravity, and are causing time-space dilations and spontaneous shifts in spiritual consciousness.

Now, we will see that the people who lived around them put a lot of energy into determining precise locations.

With the proper constructions in place, the energies of these lines could be harnessed and used directly for effects such as levitation and planetary balancing as well as experiments in human consciousness.

So if the Ancients were keeping track of these lines in any form, how would we know about them? The most obvious answer would be that they would mark them and build on them, in order to keep track of where they were.

These marks and sacred constructions occur along what is commonly referred to in Europe as "ley lines."

The idea of "ley lines" throughout the European countryside is a very old one indeed, and there are hundreds, if not thousands of dolmens, menhirs, standing stones, earthworks and great circles in England, France and other areas, including Avebury and Stonehenge. What many people are not aware of is that these "ley lines" were also actually carved into the land itself.

Serious attempts were made by those who were aware of these lines to make them easier to follow. The huge field of ley line research, covered well in John Michell's *The View Over Atlantis* and other works, we can see how ancient architects actually carved the lines as "dips" into the valleys and mountains so that you could sight them from far distances.

[11/27/07: It is also conceivable, given the Grid's shaping effect upon the continents, that the 'dips' are the natural consequence of Grid forces.]

They also erected standing stones to mark their passage. Invariably, places of worship built on these lines, and they were also used for their fertility in planting crops.

Alfred Watkins, the modern "discoverer" of these ley lines, was privy to a trance vision stood on a mountaintop and was actually able to see these lines as luminous energies crisscrossing the Earth.

According to an article by Joseph Jochmans in Atlantis Rising magazine (Issue 7, Spring "Earth: A Crystal Planet," the case for human mapping of ley lines goes far beyond just countryside. Says Jochmans:

In Ireland they are remembered as fairy paths, and in Germany as holy lines. The Greeks call them as the Sacred Roads of Hermes, while the ancient Egyptians regarded them as the paths of Min.

The Chinese today still measure the Lung Mei or dragon currents which affect the balance of land, as practiced through the ancient art of Feng-shui.

Much in the same fashion as the application of acupuncture needles in Chinese medicine, the flow of Chi or life force in the human body, so the placement of pagodas, stones, trees, and houses in the environment was regarded as a way to heal the Earth.

Jochmans goes on to describe "dream paths" followed by Australian aborigines, and "tear paths" observed by Polynesians as "lines of light" in the ocean that could be used for navigation. Jochmans goes on to say the following:

[The Incan Empire organized itself into] wacas or sacred centers situated along ceque lines that all converged at the Coriconcha or Temple of the Sun in ancient Cuzco.

Similarly, the Mayas of the Yucatan interconnected their pyramid-sanctuaries by means of stone or raised white roadways that were built in dead-straight segments through the jungle.

We can also note here that in William Becker and Bethe Hagens' article in Anti-Gravity World Grid, they make the comment that the Piri Reis map of 1513 has a series of lines practically identical to the current placement of the UVG 120 gridlines.

In the book, they actually trace over the Piri Reis map to make this demonstration, and highlight that portion of the grid and highlight it on the larger "Earth Star" grid as a whole.

We remember that this map and others like it had to have been drawn up at a time when Antarctica had no ice; and thus, it is obvious that these ancient Atlantean mapmakers were aware of the same Grid that we have been looking at.

In Jochmans' article, it says that over 3,300 ancient sacred sites have been found along the Russians' icosadodeca grid that we mentioned above.

Slightly later in the article, Jochmans mentions the Hopi Elders describing the Earth sun

being similar to the back of a spotted fawn.

As the fawn grows, the spots move and change number. Similarly, every time the Earth sings a new song or enters a new vibrational shift, Her power centers also change to a configuration, interconnected by a more complex sacred geometry.

Jochmans then describes the Buckminster Fuller-inspired experiments that we have already discussed, where a balloon submerged in dye and vibrated at certain frequencies will show distinctive "grid patterns." He then says,

When the frequency was turned higher the original dye points first quickly dissolved and a greater number of dye points began to slowly form, joined by lines in a more complex configuration.

So, Jochmans is telling us that we can expect that the Grid itself to expand and metamorphose as a result of the higher-frequency planetary cycles that we are now involved with.

In this book, we have attempted to show in quite some detail exactly how these cycles work. But if the Grid really does expand from one form of geometric order to another, how can we know about it? Is it possible that we could find proof for this as well? You bet!

Jochmans' article is of vital interest to us, as he demonstrates unique pieces of evidence that suggest that the Earth has already made serious changes from one geometric form of order to another.

A study of map projections and world-wide geological patterns conducted in 1976 by Arthur Spilhaus, consultant for the National Oceanographic and Atmospheric Administration (NOAA), revealed that when the super-continent Pangaea first broke apart approximately 220 million years ago forming the rudiments of our modern-day continental masses, the breakup occurred along equidistant lines forming the edges and points of a tetrahedron...

Based on the research of Hanshou Liu of the Goddard Space Flight Center, who analyzed magnetic field lines in the Earth caused by polar and land movements over the last 200 million years, he found that what was next outlined in the planetary structure was a combination cube and octahedron.

It is very interesting that this cube / octahedron shape, which is obviously many millions of years old, still appears to be in great use by the UFOs that we now see, according to Bruce Campbell.

Perhaps this Grid was plotted and designed from a realm outside of linear time, and this pattern of example was greatly studied and calibrated as a result.

More importantly, the work of Spilhaus appears to be showing us that our planet gradually

been moving through areas of higher and higher "density" of harmonic energy. As these moved through, the frequency of the Earth cannot be held back from expanding, and the changes accordingly.

With the work of Gregg Braden and others that show us how much energetic stress the Earth is going through at this time, we have every reason to believe that this is going to happen and we will look at the time cycles involved in this when we move into Part Three.

At this point in the article, Jochmans discusses material that we have already presented regarding the team of Goncharov, Morozov and Makarov and their icosahedron grid pattern which could be construed as the next, or most recent formation of the Global Grid.

Jochmans' list of the various planetary elements that this grid contacts is the best that I have seen, and so we will repeat it here:

1. High and low barometric pressure areas in the Earth's atmosphere, where storms originate and move along the crystal lattices.
2. The centerpoints for major ocean currents and whirlpools.
3. Areas of highest and lowest solar and electric influx, along with regions of highest and lowest geomagnetic gauss strength.
4. Points of magnetic / electric anomaly, which serve as gateways into other dimensions.
5. Major planetary fracture zones, where the tectonic plates come together and cause seismic and volcanic activities.
6. Major concentrations of ores and petroleum.
7. Planetary hotspots where the internal magma surges closest to the surface.
8. Migration routes of land, air and sea creatures.
9. Locations of major life breeding grounds and genetic pool regions, where new species have originated.
10. Concentrations of human population centers, both past and present.
11. Birth-places for human religions, philosophies, sciences, arts and architecture.

So, when we think about the power that these lines have, it becomes very clear to us that the effects on human consciousness can be profound and almost unbelievably fantastic.

If you include the Bermuda Triangle / time shifting effects as well, then we can start to see that these sacred constructions may have actually served as time machines as well. Therefore, if you stay within the sacred structure at the proper moment of time, you might just be in for a new chapter in your life!

These feats of sacred engineering obviously would not be squandered, if they could be used for positive and spiritual effects. It is for this reason that the question of the French cathedral of Chartres is especially interesting.

France was the home of the Merovingian kings, a group that some authors claim to be descendants of the bloodline of Jesus Christ.

Sir William Spencer, who tackled the question in *Bloodline of the Holy Grail* from his own study of the records of the Knight Templars, recently covered this enigmatic story. The famous book that most people are aware of concerning this subject is called *Holy Blood, Holy Grail*.

From studying this material, it is clear that the Templars were another offshoot of the Atlantean priesthods and their secret knowledge, which was preserved down through the centuries. What we actually see is that the cathedrals themselves might have been a function of "advanced" technology indeed.

There are many ways to see how this would have been possible. The stained glass windows in the cathedrals visually expressed the sacred ratios of phi and square root of two, as well as various forms of crystallized music, or sacred geometry.

Lawlor's book and many others make this point very clear, and we have an image of this on the next page — in this case, from the main stained glass window in the cathedral of Chartres. The image has added lines drawn in to indicate how it is connected to "sacred geometry."

The music that was played within the cathedrals was Gregorian Chant, which is very pure. So, right away you are visually seeing a mandala to organize your visual centers, hearing the sacred proportions, and hearing the sacred intervals in your ears as sound.

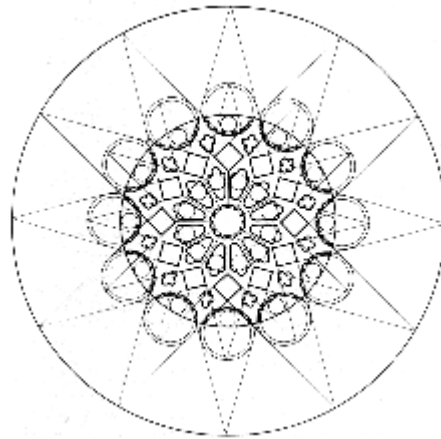
Then, the actual structure of the cathedrals was sized in direct proportion to the measurements of the Great Pyramid of Giza! This also might have helped to preserve the harmonic proportions of the pyramid's structure, as well as paying homage to "a complete set of records of sacred mathematics encased in stone."

Finally, the domed ceilings of the cathedrals directed the natural spirals of energy back up and into the gathering. In *The Law of One, Book Three*, Ra discusses how there are many examples of this type of energy harnessing being done, including the use of the teepee and the pyramids.

Ra told Elkins et al. that these constructions will dramatically speed up an entity's spiritual process as it uses them, and that it is therefore important to exercise extreme caution when experimenting with such structures.

The reason for caution is that the more personal issues one needs to "burn off" to further their spiritual growth process, the harder it would be for them to work in such a structure. The heightened energy that would come to them would make their "blockages" dissolve much more quickly.

In the long run, this is for the best, but in the short term it is very stressful — and this is what the Solar Cycle that we will be discussing is doing to all of us right now. Wilcock's book, along with most others of similar quality will repeatedly address this point.



Another example of this sacred technology being put to use by various secret societies is the construction of the United Nations Meditation Room.

This is written about in the very one-sided and Fundamentalist Christian-slanted book *Cult of the All-Seeing Eye* by Robert Keith Spenser, published in April 1964 by the Christian Club of America in California.

The book takes ceaseless "pot-shots" at almost everything and everyone imaginable in the international government and metaphysics or esoterica.

For example, at one point they zero in on the gentle Thomas Sugrue, who wrote the well-known book *There is a River*, which exponentially increased Edgar Cayce's popularity in the few years prior to his death.

Their attack was based on an esoteric symbol that he placed on the books in his library. The symbol was designed from his initials TS, the T being the "Tau Cross" and the S being the "S of wisdom," which to Spenser's team could only mean the Devil!

Even though this book is alarmist, conspiratorial and fundamentalist, we actually can pick up some interesting information along the way.

It is important to note here that we are not necessarily condoning all actions that have apparently been undertaken by secret societies throughout time. There are clearly going to be some bad apples in these groups, just as there are in people. (For example, Adam Weishaupt's "Bavarian Illuminati" certainly appear to have all the hallmarks of highly self-serving or "evil" intentions.)

We feel that it would be foolish to simply make a blanket assumption that all secret society members in positions of power are part of some vast, evil conspiracy.

Remember that we briefly said that *The People of the Secret* by Ernest Scott focuses on the positive aspects of these groups, in their ongoing communication with Higher (or extraterrestrial) beings.

Intelligence to direct humankind towards greater spiritual awareness.

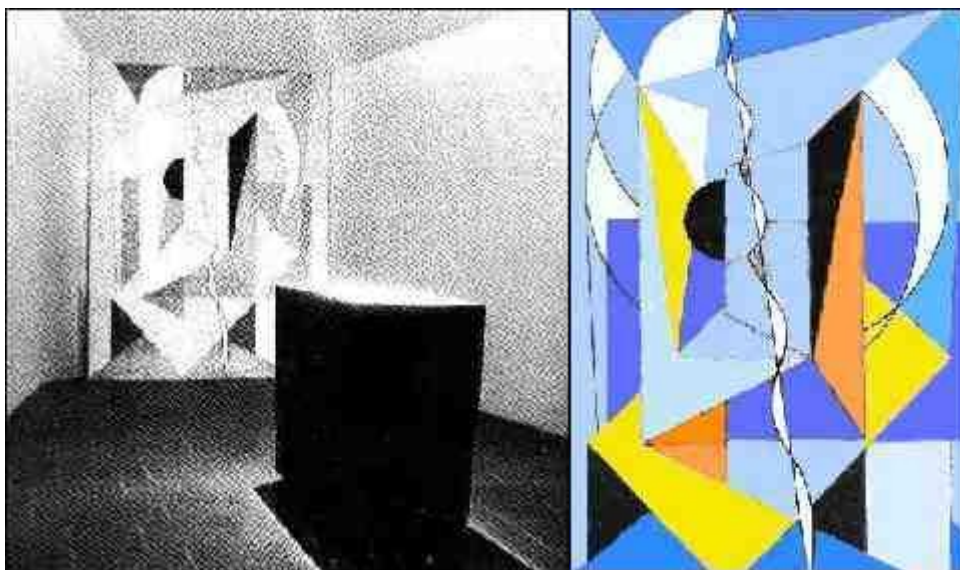
What we do see in *All-Seeing Eye* is specific data regarding a room that is built with all harmonic specifications that we have just discussed in relation to the cathedrals. The existence of this room directly implies that the United Nations has maintained at least a portion of the knowledge of these secret traditions.

First of all, the Meditation Room has a very bizarre-looking mural within it, and in *All-Seeing Eye* they demonstrate that this has a great deal of 'sacred geometry' and ancient symbolism construction.

The builders insisted that it did not have any specific symbolism, but Spenser paints a foreboding image of a massive cult that seeks to subvert Christianity into a larger religion steeped in pagan traditions.

This group committed the unpardonable sin of wanting to unify the spiritual beliefs of the world that everyone could agree with each other.

So, let's look at the picture of the room and its mural for starters. [Note: We colorized the mural to the right as it was done very poorly in the original]:



The seats in the room are in the back, where the photograph was taken. The room itself is the shape of a truncated pyramid, which is certainly a "sacred shape," as a function of sacred geometry.

This truncated pyramid shape was worked into the mural in several different places, as a truncated pyramid with capstone as well. We can also see that the geometric form of the altar in the room is preserved in the mural through rectangles that are of the same size and shape.

The very geometric and colorful mural helps to organize the meditator's visual centers

geometry, just as we have seen with the Chartres image on the previous page. Music played in the room helps to organize the meditator's mind, again duplicating the effects in the cathedral.

And last but not least, what is that big stone altar doing in the middle of the room? Surprisingly enough, it is a piece of naturally magnetic metal or magnetite, and is indeed the largest piece of magnetite ever mined.

Even more interesting is the fact that its foundation goes straight into the bedrock of the earth underneath the floor of the room.

(According to All-Seeing Eye, the lodestone was the largest of its kind ever mined, and was given to the United Nations by the Swedish in 1957. The public does not have access to the room underneath.)

If we look closely, we can see that the circle in the middle could be construed as the Earth's tilted axis clearly visible. What is then interesting is that once again we see a spiraling pattern of time in the diagonal line from the bottom right to the top left that has a snakelike curve.

And furthermore, there are three large rectangles that can be made out in the diagram. They are undoubtedly in a spiraling pattern with relation to each other — one being left to right, one being diagonal and one being top to bottom.

This does certainly look like the phi spiral is being implied herein. Other symbols are hidden in this mural as well, including the circle with a dot in the center, the astrological symbol for Mars.

Obviously, the architects of the UN Meditation Room had this harmonic system down to a science. We have the proper room structure, the proper visual structure and the proper musical structure. We then have a gigantic piece of natural magnetite, which obviously has a tremendous magnetic field.

Why would the architects of the UN Meditation Room wish to import such an expensive piece of magnetite if it didn't "do" anything? Wouldn't it make a lot more sense that this magnetite actually harnesses and enhances the natural spiraling magnetic Earth energies in the room?

As this book series goes on, we will see that magnetism is the primary means to harness Earth energy, just as we can see with the Earth's magnetic field. We can definitely start to see that those who know, this technology was indeed never "lost," only kept hidden.

By meditating in a room with a giant magnet in it, the natural hyperdimensional energies of the Earth are greatly enhanced. This certainly explains why the architects made sure that the room had a foundation that went straight down into the bedrock of the land below.

Who knows what remarkable functions of consciousness could occur in this room with a properly tuned group of meditators at the proper time of the year?

And now we come to the most interesting part of all of this — the famous All-Seeing Eye symbol printed on the reverse side of every American dollar in circulation, as well as on the cover of the

book in modified form.

Thomas Jefferson, Benjamin Franklin and John Adams adopted this symbol after they were given the task of creating a seal for the United States of America on July 4, 1776. A French Watercolor portrait painter named Eugene Pierre Du Simitiere, who was commissioned by Thomas Jefferson, rendered the original design.

The All-Seeing Eye is unanimously agreed upon as being a "Masonic symbol." There are voluminous materials available to show that the founding fathers of the United States of America were all Masons. Freemasonry is a "fraternal order" that traces its origins far back into history.

The work of Manly P. Hall covers the subject of Freemasonry quite considerably, especially his incredible "encyclopedic overview" entitled *The Secret Teachings of All Ages*.

Those who are familiar with this book, or with any of Hall's work, should be well aware of the gigantic amount of information that is available on these and other "secret societies" throughout time.

An environment of such secrecy is perhaps the only way that such a daring American Revolution could have been organized in the first place. Many different sources point out that the Boston Tea Party was a Masonic-driven event.

This historical event protested against Britain's tea tax, where a large group of men dressed as Native Americans boarded a British ship in the harbor and dumped out all of its onboard cargo into the ocean.

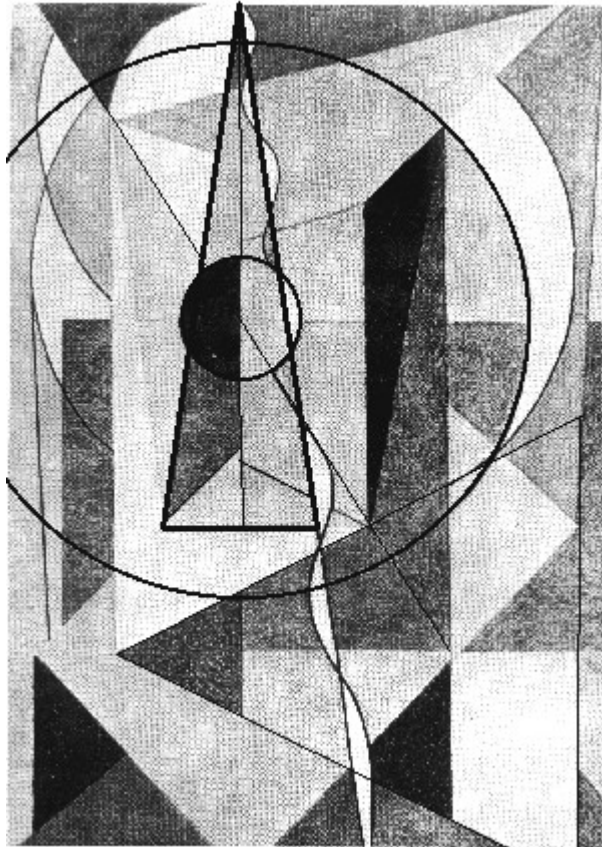
In the Time-Life book *Secret Societies* from the *Mysteries of the Unknown* series, there is a drawing of a picture that someone had sketched of the Masonic meeting hall that night. For some inexplicable reason, the building was empty, even though the scheduled meetings were being kept with almost religious observance.

At the bottom of the sketch, the artist writes: "We all went out for a cup of tea."

What is particularly interesting to us is the obvious connection between the All-Seeing Eye, the triangle and the basic form of the "consciousness units" that we have discussed so far.

If we look back at illustrations such as the Barbury Castle crop circle, we can clearly see that the predominant design is a triangle with a dot in the middle. As we now know that this dot represents the One, or the Octave, we can understand why it would be given the symbol for Deity, the All-Seeing Eye.

Now, if we look back to the United Nations Meditation Room mural, we can see that this All-Seeing Eye symbol was carefully and secretly encoded within it:



What we see in the image is that the central circle, divided into quarters to symbolize the four elements, is directly framed within a triangle. Although this triangle is extended, the image remains the same.

Furthermore, when you continue the circular line to the left of the central circle as we have done, you can see that this forms a larger circle that precisely circumscribes the smaller one. This is a classic astrological symbol for the Sun.

By putting a line through the central circle on the exact same diagonal angle of tilt that is suggested by the surrounding shapes, we can indeed see that it represents the Earth, tilted away from the Sun with one half illuminated with daylight.

And then, to top it all off, we have the suggestion of a spiraling line that is at work on the central circle.

So, we can see that there is a definite reference to the circle within a triangle, the universal symbol for the "consciousness unit" that shows up in many different ways, including the crop circles.

We can see that the mural implies a spiraling quality to these consciousness units, which is now discussed in great detail. We can also see that the consciousness unit is also indicated by the triangle, being the Earth.

So, this is obviously a symbolic construction, although the UN Review of 1958 simply re-

as having been designed "to conform with the purity of line and color sought, for what General Dag Hammarskjold has called 'a room of stillness'."

Interestingly enough, the harmonic numbers that we have been studying are worked in construction as well. Spenser tells us that there are 72 geometric figures in the diagram

72 would obviously be half of 144, which we have now seen over and over again to be fundamentally related to both sound and light and the Great Solar Cycle — remember there are 144,000 days in each baktun.

The spiral in the diagram has nine sections, and this is also a fundamental number, the "block" of the entire Gematrian system of frequencies.

So, if we look back to the symbol on the dollar bill, we can see that it is comprised of a pyramid. Interestingly enough, if we count the blocks on the pyramid, we will discover there are 72 of them altogether — again, the "cornerstone" frequency number.

The All-Seeing Eye and its positioning in the Great Seal refers to the symbolism inherent in the Great Pyramid's construction, which we will read about in Chapter 20 when we discuss Lemesurier's epic work, *The Great Pyramid Decoded*.

According to this number series, the number "six" indicates preparation or incompleteness. The message of the Pyramid's inner passageways has entirely to do with humanity's motion from incompleteness towards spiritual perfection, completeness or Ascension.

This is symbolically accomplished when the Pyramid is turned into a five-sided, instead of a six-sided object. This is done quite simply, as the Pyramid as it now stands has a flat top, which makes it a six-sided object. When the capstone is put back in place, it becomes a five-sided object. The number five indicates perfection and initiation.

So, what we have here is a symbolic glyph for the instreaming fourth-dimensional energy. The "capstone" for a Pyramid with 72 blocks! It is actually a quite ingenious symbol which you should really think about all the information that it contains.

Clearly, the sum total of knowledge that could be achieved from a continent such as Atlantis is indeed vast. We have seen evidence that much of this knowledge has been passed down through the ages.

The work of de Santillana and von Dechend, as we will see later in this series, shows us that in almost every culture in the world, a "flood myth" exists which preserves all of the crucial "frequency numbers" responsible for the Earth's wobble, known as precession — a number of fundamental importance to us.

The standard "precessional number" of 25,920 years is also a Gematrian number, an exact multiple of the same frequencies we have been discussing as the speed of sound vibrations per second in the atmosphere. (It reduces to 2592, which is a higher harmonic of the same octave-based

set.)

When we look to the Maya, we can see a culture that might very well have preserved a lot of Atlantean knowledge over time. Nowhere is this more apparent than in their amazing preservation of a system of precise data regarding Sunspot cycles.

The work of Maurice Cotterell will give us the hard science to back up the Mayan numbers when we learn from Mayan codices that their Calendar cycles chart the beginnings and endings of the ages, the pieces do indeed start fitting together very nicely.

The Maya had a system of mathematics so exact that we are still trying to catch up to them and figure out exactly how they came about all of this information.

Now that we are looking at the data regarding the Great Seal of the United States, we realize it is possible that the knowledge of this same Great Cycle was preserved throughout the ancient civilization and its secret societies.

If this were so, we might better understand why the Pyramid symbol was placed on the Great Seal of the United States. What we can see is that this Pyramid eloquently combines the "frequency number" of 72 with the diagram of the "consciousness unit" of the upcoming fourth dimension also seen in the Barbury Castle crop circle of 1991 and many hundreds of others.

And finally, we have the clear-cut metaphor of the re-establishment of the Pyramid's capstone which symbolically refers to the Ascension of the human species.

It is very interesting to point out here that the Egyptian Board of Antiquities, spearheaded by the efforts of Dr. Zahi Hawass, has now said that they will place a golden capstone on the Great Pyramid on the night of Dec. 31, 1999.

Even though most people don't really understand the symbolism of this, we can certainly understand it now. This piece of information makes an even greater case for the knowledge within the crop circles that we are at the end of our present age, and ready for Ascension or a hyperdimensional shift.

So, if the Great Seal's symbolism is not a coincidence and the American founding fathers indeed have this knowledge, there should be some other glaring clues. One of these clues is the pattern of stars above the Eagle in the obverse side of the Seal.

If we look closely at this pattern, we can indeed see that it is fashioned as the Star of David which we have already seen how the Star of David is a two-dimensional diagram of the star tetrahedron within a sphere, the energetics of the Fourth Dimension.

We are also told in All-Seeing Eye that the national bird for the US was not originally the Bald Eagle, but the Phoenix, symbolizing the death of the old and the rebirth of the new.

And that is certainly not all. Almost everyone has seen the Latin words that surround the Great Pyramid on the dollar, but very few actually understand what they mean. The

"Annuit Coeptis" and "Novus Ordo Seclorum."

Both of these are quotations from Virgil, a Greek mystic and philosopher. The first state "Annuit Coeptis," means "He [God] has looked with favor upon our beginnings."

We can see the physical counterpart of this in the foundation of the United States being "blessed," but we can also see a larger, more metaphysical explanation that would have the origin of humanity as a whole, as a Divine species.

But now, let's look at the bottom portion: "Novus Ordo Seclorum." The meaning of this given to us in Spenser's book through a quote from C. A. L. Totten, a 1st Lieutenant in the artillery of the U. S. Army, who communicated his views on the seal to Charles J. Folger of the Treasury, on February 10, 1882:

The All-Seeing Eye is one of the oldest hieroglyphics of the Deity. The triangle also is a symbol of the most remote antiquity...

The descent of the mystic eye and triangle in the form of a capstone to this mysterious [the Great Pyramid of Gizeh] of all times and nations, is to us as a people most pregnant significance. The motto, Novus Ordo Seclorum, is a quotation from the 4th Eclogue and borrowed in turn by Virgil from the mystic Sybylline records.

The entire quotation is as follows: 'The last age of Cumaen song now comes. (Novus Ordo Seclorum altered from Magnus Soeclorum ordo), A mighty order of ages is born anew. E prophetic Virgin and Saturnian kingdoms now return.

Now a new progeny is let down from the lofty heavens. Favor, chaste Lucina, **the boy s born in whom the iron age shall come to an end, and the golden one shall arise the whole earth'.**

This passage is indeed quite revealing. What we learn is that "Novus Ordo Seclorum" do mean "New World Order" as many conspiracy theorists would claim, but actually "A mighty order of ages is born anew."

When we think of a mighty order of ages, we immediately think of the precessional cycle comprising of the 2,160-year ages of the Zodiac. Then, if we think of this "mighty order" being "born anew," we could well expect that this would be signified by the ending of the cycle, which we are making a very strong argument here as being related to Ascension of the Ages.

But does this statement from the 4th Eclogue and Virgil back up the idea of such a shift carefully.

The last age... now comes. A mighty order of ages is born anew... Now a *new progeny* is from the lofty heavens.

Exactly what is this new progeny? A new life, a rebirth, an entire group of Ascended humans? It certainly would appear to be that way, in the same sense that the Cayce Readings say that the Atlanteans are about to form the fifth "root race."

We then go on to read the statement,

The boy soon to be born in whom the iron age shall come to an end, and the golden one shall arise again in the whole earth.

Since we could certainly argue that we are still in an "age of iron" and machines even now make it hard to see that this passage refers to the end of our own age and the beginning of the new age of light or "enlightenment."

Furthermore, the fourth-density souls are indicated here as looking "golden." There are many spiritual sources that attest to the fact that this is indeed how an Ascended being would appear, the most obvious being the Bible indicating the appearance of the Ascended Christ.

Now, with a source of guidance such as the Cayce Readings, we can see a comprehensive understanding of the true meaning of the Christ Spirit, which is that Divine spark within each person. The Coming of Christ is actually the rebirth of this Christ Self within each individual entity, and the end of the Ages represents the "completion" of the same curriculum that Jesus patterned for himself.

So, this notion of the "golden one" arising in the whole earth certainly could be an Ascended being metaphor.

Perhaps what is even more interesting is that this passage suggests that extraterrestrials were involved in all of this as well.

"Both the prophetic Virgin and Saturnian kingdoms now return." We are told in Spenser's *The Saturnian Kingdom* that Saturn was the father of Osiris, and that the All-Seeing Eye is the symbol of Osiris.

As this was the highest god in the Egyptian pantheon, we can certainly wonder if there was an extra-terrestrial connection to all of this.

HANCOCK AND BAUVAL

One thing that we do know from the work of Robert Bauval, including *The Orion Mystery* and *Message of the Sphinx* (co-authored with Graham Hancock) is that the three pyramids of Giza indicate a precise "terrestrial map" of the constellation Orion in the sky.

Bauval also tells us that to the Egyptians, the Orion constellation was the symbol of Osiris. Furthermore, we can see from Bauval's work that the only time that the terrestrial, pyramidal

Osiris and celestial, star-based Osiris could have been in perfect alignment was 12,500 years ago. And as we will continue to see, we are at the end of yet another precessional cycle, which has been carefully marking out for us year by year. By Dec. 22, 2012, we will have completed one cycle and entered the next cycle.

So, it is possible that the "Virgin and Saturnian kingdoms" could also be a coded reference to the passage of the ages. But, if we choose a more adventurous approach, it could be that two different extraterrestrial "kingdoms" return to Earth at this time.

If this is what it means, then certainly the evidence is all around us, as UFO sightings and other information continues to build up on all sides. We may never know exactly what this information is really trying to tell us, but we can certainly see how all the major clues are laid out for us.

EDGAR CAYCE AND THE HALL OF RECORDS

The next bit of "historical" information worth covering in this chapter is the notion of the Hall of Records. This was referred to in the Cayce Readings as a set of written records as well as technological artifacts from the Atlantean civilization.

The readings said that we would find a room under the right paw of the Sphinx that would be the Hall of Records, and since the late 1980's the existence of this room has been confirmed. Numerous groups have used advanced technology such as ground-penetrating radar to find it, and there is very much indeed a room present down there.

Even more recent "secret" bulletins authored by Graham Hancock and others have suggested that there appears to be an entire complex of underground tunnels and rooms beneath the Giza plateau, including one room that is the "size of a giant cathedral."

Some of these passages and rooms were actually admitted to exist on the Fox TV special *Opening of the Tombs*. In this March, 99 broadcast, Zahi Hawass gave the world its first look at what was believed to be the Tomb of Osiris, contained within a room tunneled over 100 feet into the ground.

The program also suggested that other passageways could lead out from this one, although not directly confirmed. Many people, including Wilcock, feel that this is only a small portion of the knowledge that is actually available at this point in time.

If Cayce's readings are indeed accurate, then there is much more waiting for us under the Egyptian sand. When skeptics lash out against Cayce's idea of Atlantis, they forget the fact that Cayce's readings had unparalleled accuracy in the medical arena, far beyond any chance.

Many of us are far too quick to pick and choose among what these or other readings mention, accepting what we want to accept and refusing the rest. If we take the Cayce Readings

faith, then we indeed have proof of the existence of Atlantis.

However, all of that might now be changing. We remember that Cayce's readings said the Book of Records would be opened in 1998. We will suggest that this actually DID happen, just in Egypt, even if very few people are aware of it.

We DON'T have to take Cayce's readings "on faith," as a group of people have actually done with hard, physical evidence to prove that his readings were right.

And furthermore, those who have unearthed this evidence have apparently already made some significant discoveries that will change our idea of life on Earth forever once they are released.

Cayce's readings had said that early signs of Poseidia, one of the last islands of Atlantis, would "be seen to rise" in this area in 1968.

And indeed, it was in this same year that Dr. J. Manson-Valentine was flying over the area and noticed rectilinear structures in the water. Dr. Manson-Valentine's findings included what was to be called the "Bimini Wall," a gigantic set of cyclopean stones that were assembled in a way that must have been a gigantic seawall to protect a coastline at one time.

Obviously, we can now tell that it didn't hold up against the rising tides. Many other megalithic stone discoveries also suggested a lost civilization of some sort, although this material has been largely ignored since the 1970s.

CUBA'S ATLANTIS

[11/27/07: Section added at this time]

The case we are about to discuss had its first online publicity, as far as we can tell, on L. Moulton Howe's "Earthfiles" website on May 18, 2001, in an article entitled "Underwater City Reported off Western Cuba." The discovery itself was first made in July 2000.

On December 7, 2001, the BBC News featured the story: obvious remnants of an ancient civilization were found, in nearly a half-mile deep area of the ocean off the Western tip of Cuba.



Africa

Americas

Asia-Pacific

Europe

Middle East

South Asia

From Our Own
CorrespondentLetter From
America

UK

UK Politics

Business

Sci/Tech

'Lost city' found beneath Cuban waters



A team of explorers working off the western coast of Cuba say they have discovered what they think are the ruins of a submerged city built thousands of years ago.

Here's an excerpt from the original story:

<http://news.bbc.co.uk/2/hi/americas/1697038.stm>

A team of explorers working off the western coast of Cuba say they have discovered what they think are the ruins of a submerged city built thousands of years ago.

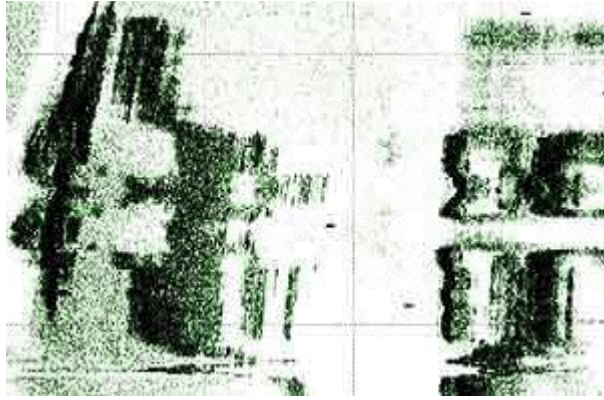
Researchers from a Canadian company used sophisticated sonar equipment to find ancient structures more than 2,000 feet (650 metres) below the sea's surface.

They say they still do not understand the exact nature of their discovery, and plan to start a thorough analysis of the site — off the tip of the Guanahacabibes Peninsula — in January.

Advanced Digital Communications is one of four firms working in a joint venture with President Fidel Castro's government to explore Cuban waters, which hold hundreds of treasure-laden wrecks from the Spanish colonial era.

Robot scanner

The explorers first spotted the underwater city last year, when scanning equipment started to produce images of symmetrically organized stone structures reminiscent of an urban design.



[Crude sonar image of one area of 'city' — Zelitsky / ADC, 2001]

In July, the researchers returned to the site with an explorative robot device capable of highly advanced underwater work.

The images the robot brought back **confirmed the presence of huge, smooth blocks with the appearance of** **Some of the blocks were built in pyramid shapes**, others were circular, researchers said.



[Paulina Zelitsky viewing pyramid from submersible's video camera]

They believe these formations could have been built more than 6,000 years ago, a date which precedes the great pyramids of Egypt by 1,500 years.

"It's a really wonderful structure which *really looks like it could have been a large urban centre*," ADC explorer Paulina Zelitsky told the Reuters news agency.

"However, it would be totally irresponsible to say what it was before we have evidence added]

The Cuban article from Ingles Gramma Internacional had some extra details missing from the report:

<http://www.granma.cu/ingles/dic02/51ruinas-i.html>

Ruins of 'lost city' found under Cuban waters

HAVANA- Using a robot submarine to explore Cuba's seabed, researchers confirmed on Tuesday the discovery of some stone structures which could have been constructed by an ancient unknown civilization thousands of years ago...

In July of 2000, ADC researchers using sonar equipment identified a great platform about 100 meters deep, where symmetrically organized stone structures, resembling an urban layout, in sand, were clearly visible. From above, **these structures appeared to be pyramids and buildings**, she declared.



[Close-up on pyramid image from Zelitsky's submersible]

One year later, in July 2001, the ADC team, its Cuban partner and experts from the Academy of Sciences of Cuba returned to the area on the ship called **Ulises** and sent a robot submersible, managed by remote control, in order to film parts of the 20-square-kilometer area.

That footage confirms the presence of large blocks of granite in circular and perpendicular formations.

[What's the first thing you think of when you hear "large blocks of granite in a circular formation? Bingo. As the articles go on, we'll get direct confirmation of this point.]

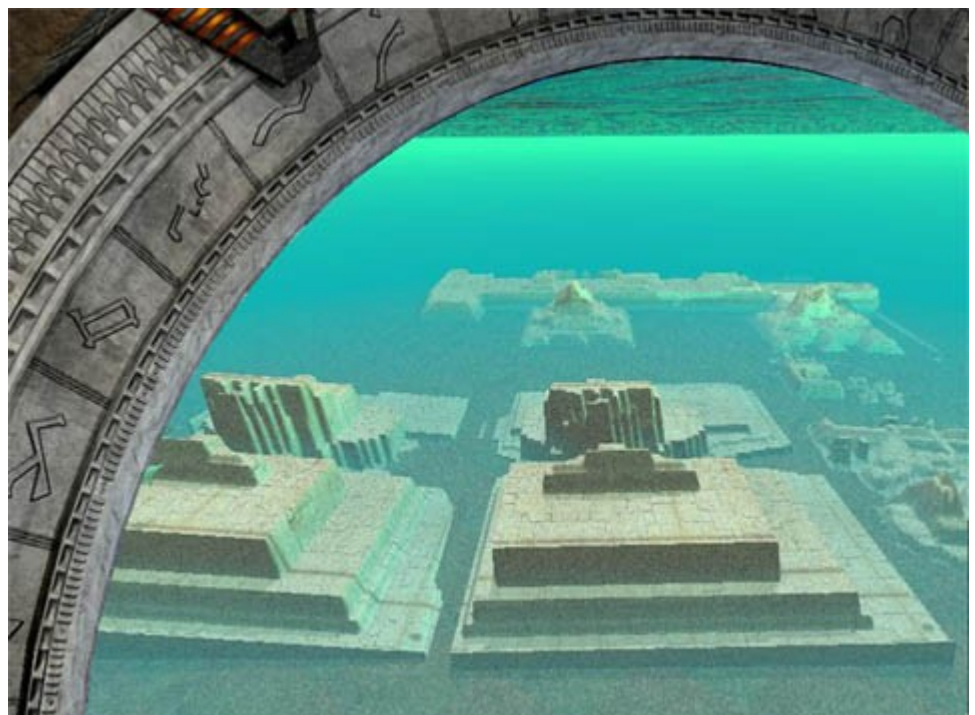
Most of the blocks, between two and five meters long, were not covered. Other blocks were covered with sediment and the area's fine white sand.

[Uncovered blocks are obviously hard to miss.]

This intriguing discovery provides evidence that Cuba could have been linked to the Yucatan Peninsula by a strip of land, researchers said.

"There are lots of new theories about land movement and colonization, and what we are doing here should provide lots of new and interesting information," Zelitsky said. [emphasis added]

On his website at <http://www.personalvitality.com/hslide0008.htm>, Hans-Peter Ludwig offers a reconstruction of the site, based on the best-available data that has been released to the public.



This story actually did make it into National Geographic on May 28, 2002. Notice the author's over-reaching to try to appease the skeptics and dismiss the whole thing with some sort of undefined 'natural explanation':

http://news.nationalgeographic.com/news/2002/05/0528_020528_sunkencities.html

Cuba's Sunken City

Deep in the waters of Cabo de San Antonio, off Cuba's coast, researchers are exploring the formations of smooth blocks, crests, and geometric shapes. The Canadian exploration company that discovered the formations, Advanced Digital Communications, has suggested that they may be the buildings and monuments of an early, unknown American civilization.

Many scientists are skeptical of any theory that might tempt people to draw a parallel with the fabled lost city of Atlantis. Geologist Manuel Iturralde, however, has stressed the need to keep an open mind while investigations of the site continue.

"These are extremely peculiar structures, and they have captured our imagination," said Iturralde, who is director of research at Cuba's Natural History Museum. Iturralde has studied coastal and underwater formations over the years, but said, "If I had to explain this geologically, I would have a hard time."

In his report on the formations, Iturralde noted that conclusive proof of man-made structures at the site could reinforce some oral traditions of the Maya and native Yucatecos. These people often retell ancient stories of an island inhabited by their ancestors that vanished beneath the waves.

Iturralde makes it clear, however, that **just because no natural explanation is immediately apparent, it does not mean there is no natural explanation.** "Nature is able to create some really unimaginable structures," he said. [emphasis added]

The "natural explanation" argument might make skeptics feel more comfortable in their existing worldview. In a well-mirrored article from Linda Moulton Howe featured interviews with Zelitsky and her partner Paul Weintraub. In these articles, any vestige of hope skeptics may have for a "natural explanation" is completely shattered.

Here are details from the [November 19, 2001 interview](#):

LMH: Is there anything that you can say on the record this morning that I can do some kind of an update?

PW: For the record you can say that the Center for Marine Archaeology and Anthropology at the Cuban Academy of Sciences is currently analyzing video data which we have from the perimeter of the site from megalithic stones.

They are working on inscriptions that they have detected on these stones, and they are analyzing them at the moment.

LMH: What are the estimated sizes of these stones?

PW: The estimated sizes of these stones — they are roughly about two by five meters. **Very large stones. The stones are about six feet by fifteen or sixteen feet,** something like that (six feet on each of four sides, and sixteen feet high).

LMH: And you mentioned possibly the same kind of look as the perimeter stones at Stonehenge? That kind of megalithic looking?

PW: Yes, **the same kind of stone that you see on Easter Island and in Stonehenge.** Very large and smooth, light-colored that bear no relationship to the surrounding ecology.

And also there is evidence of smooth cut and fit, that is one on top of another, as if the basis of a pyramid or something like that.

LMH: And on those stones, where are the possible inscriptions? You know, like top or bottom or middle or side?

PW: They are not anywhere specific on the stones, these inscriptions. They could be in the middle of the stones or on the top parts of the stones across. One thing we found, the anthropologist found, was an American cross. It's a Central American cross.

LMH: Is that where two lines are crossed perpendicular to each other with anything special on the ends?

PW: No. They are not two lines. They are two oval shapes crossing each other.

LMH: Two long ovals crossing each other the way a cross crosses?

PW: Yes, the way a cross crosses, only the shape is not a single line. It is a flattened circle.

LMH: Do these so far from what you have seen on the video seem to be inscribed into the stone like a quarter half an inch?

PW: Yes, we can't tell really the depth. There is limited lighting and limited perspective as well because of the technical problems with the ROV.

LMH: It is really dark at a half mile down, isn't it?

PW: Well, there is no light at all except for what we provide.

LMH: So you are limited in only what you can get in that light in front of you?

PW: That's OK. We have good lighting now and we have a low-light camera to add to our two or three other cameras we have there as well. To our zoom camera and we have several cameras that work down there and we have good lighting.

There was a lot of debris in the water at that time, created by a strong current, probably by plankton.

LMH: When do you think you will be able to go down with all the cameras functioning?

PW: Well, hopefully, if we get all our systems back together within the next two months and we get a break in the weather.

LMH: And the museum that is trying to analyze these carved inscriptions you have seen so far, **have you had any indication that they think it matches any known ancient script?**

PW: We don't have any conclusions yet. They are, the analysis is still in process.

LMH: Have they made any comment about them, the symbols or carvings?

PW: **Greek-like inscriptions.**

LMH: Greek like?

PW: Well, **hieroglyphic-like inscriptions.**

LMH: Hieroglyphic like Egypt?

PW: I said the lettering is *Greek-like*. Hold on just a minute. Why don't you talk to my boss.

LMH: OK, I would love to.

PW: Her name is Paulina Zelitsky.

Paulina Zelitsky: Hi, Linda.

LMH: Hello. I'm so happy to meet you on the phone.

PZ: Yes, thank you. I was overhearing my husband and I don't want you to make any bad mistakes mixing G is not Greek. It has the same tendency, but it is not Greek. We don't know what it is, and scientists are decipher it.

LMH: Right. It has some resemblance in lettering to Greek, but is not Greek. And there are some like pictographs would fall into the hieroglyphic category as well?

PZ: Yes, and symbols as well.

There are different signs, more like American nature, like they have found in Central America. Pyramids. And the delineation of the structures which suggest pyramidal type, American pyramidal type, not Egyptian pyramids.

LMH: OK, you mean by the glyph symbols that would be found in Mesoamerican pyramids?

PZ: Yes.

LMH: And an example is that cross made of ovals crossing each other?

PZ: That's an example. That's correct. And that type of cross is called an American cross. We find it in Cuban caves and on the island.

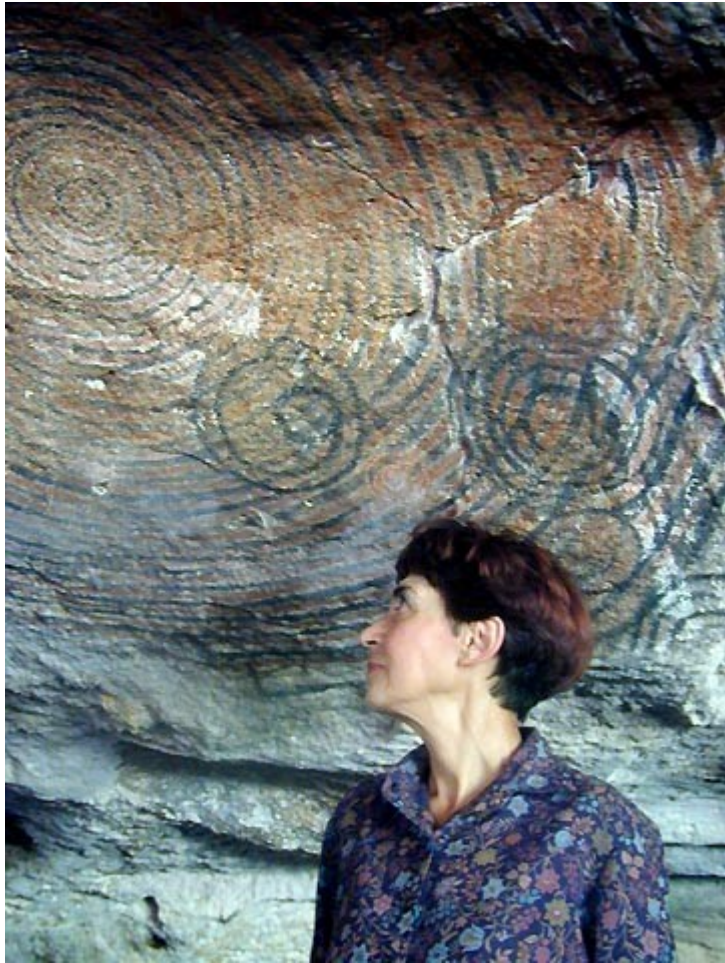


Example of cross from Cuban cave. Copyright Paulina Zelitsky, 2001

PZ: They are very ancient, pre-Columbian, probably thousands of years before Columbus. You know, Cuba has been visited three times in our information of the islands...

LMH: And in caves underwater around the island, the American cross has been found carved in?

PZ: Yes, and other symbology, other cosmic type depictions.



Example of curious ‘harmonic’ spirals from Cuban cave. Copyright Paulina Zelitsky, 2001

PZ: And you find this in Cuban caves around the island, not only in the south but in the north. And those caves are underwater caves. One cave I know of is on land, and it has this type of symbology as well.

LMH: And when archaeologists have studied the carvings in the caves on Cuba, have they been able to match symbols and glyphs to any other pre-existing known language?

PZ: They are trying to match it to Central American, but it is distinctive on its own. It’s very difficult to say if ancient American symbology is identical to this. It is not identical. It’s similar, but not identical.

Here is a subsequent interview between Linda Moulton Howe and Paul Weinzwieg from September 24, 2003, 10 years later — which went into additional detail unseen elsewhere in the media coverage of this unique story:

<http://www.freerepublic.com/focus/f-news/992589/posts>

PW: We have the sonar images which show architectural types of structures with geometry, perpendicular lines, that one does not tend to find in nature and are not repeated anywhere else in the region.

They are extensive and large and we have video, but is suggestive because the stones that we have videotaped are very smooth.

They do not belong to the local geology at all, according to our ocean bottom survey work and to Dr. Iturralde. The stones appear to have some aspects of cut and polished features.

Paulina and I do feel that we have found something remarkable. Our intuition tells us in addition to the data that there is a good chance that there was some remarkable civilization on an island many thousands of years before the present day Cuba.

LMH: And the sizes of what Dr. Iturralde calls megalithic structures — do you have better estimates on what the width and height of those rectangular structures would be?

PW: According to our estimates, the sonar images are up to 150 to 200 meters (492 to 656 feet) in length and 50 to 100 meters (164 to 328 feet) in width. So **they are very large structures.**

LMH: About how high?

PW: Well, it's difficult to say because what we see is only above the sandy soil of the ocean bottom. That could be up to 20 meters, but there could be extensive structures below the loose sand, white sand on the ocean bottom.

LMH: When Paulina was describing one of the crossed ovals at least one of the investigators thought might be those, was it on one of the megalithic structures or was it on a single, separated stone?

PW: It was on what we call the word 'megalith' is used to describe both the structures and the individual stones of the structures. The stones are also very large.

LMH: What's the size of them?

PW: They could be 10 to 15 feet high.

LMH: By about what width?

PW: 5 to 10 feet wide. We did not videotape many of these stones, so we have a few samples. But **they are very large and some of them appear to be fitted that is, one on top of the other in a comfortable position.**

LMH: And in fittings, **would it look sort of like Stonehenge** kind of construction or?

PW: **That's right. Not so long, but certainly more square, more rounded, more perpendicular.**

As I say, the entire ocean bottom in that region is simply white sand with a few outcroppings of blackened limestone.

By the way, **when limestone is blackened, it's because of contact with oxygen. So, that also suggests the structures are above sea water.**

These things (megalithic structures) just appear out of nowhere that look like granite. Because there is no granite in Cuba. Cuba is a limestone similar to the Yucatan. It's mostly limestone, the whole area is limestone.

LMH: What about that pyramidal shape that was in the image of Paulina looking at the computer monitor?

PW: That's a stone. It's one of the stones.

LMH: And it does seem to be pyramidal shaped?

PW: Yes. Yeah, it has a shape that doesn't appear often in nature. It's not a shape one would expect to see in nature.

For those who are skeptically challenged by the one pyramid image they saw from Zelitsky's monitor earlier, I've now worked up a comparison photo.

It is true that her pyramid does not have the normal slope angle of, say, the Great Pyramid of Giza. However, it is totally consistent with the so-called Bent Pyramid of Dashur. Check out the comparison photo and see for yourself.



Zelitsky's pyramid, from submersible view, compared with Bent Pyramid of Dashur.

Now, let's return to the article where we left off for some valuable additional information regarding National Geographic's proposal.

LMH: In terms of the robot you had hoped you could get down there with, maybe one of the advanced space technologies could go and drill into some of these structures and find out exactly what they are?

PW: We are discussing a proposal with National Geographic right now to do a preliminary survey using our advanced technology, but a more extensive survey than we've done before and on the basis of those findings, to decide whether to go forward or not.

If we do go forward, of course, it would be with more advanced technology.

LMH: Are you now closer for National Geographic to help with some funding and equipment here?

PW: They would like to send their own camera, their own person down, on our ship to validate what we've found. We would get a little more information that would support a more strongly the hypothesis that there was a civilization there.

And then they would, of course, take the next step which would be a more serious financial and logistical effort.

Then it's a matter of timing their people have to be ready, we have to be ready. We have to have all permits and approvals.

place. The weather has to be right. The season has to be right. It's a complex scenario, you know?

LMH: *Would you think the spring or summer of 2004 might be an opportune time?*

PW: *Yes, that sounds very possible.*

Did anything actually happen in 2004? Apparently yes — but it wasn't as successful as hoped. The most recent data we were able to find on the subject was translated from Diario de la Marina on July 10, 2005:

<http://www.s8int.com/water27.html>

In October of 2004, Paulina Zelitsky and her well-equipped team made an expedition to the site where the underwater discovery was made, also leaving from the Port of Progress, to prove the island collapse theory, but they could not complete the mission due to technical deficiencies of the submarine that rendered it unable to take images from the marine bottom.

At that time, the apparatus was only able to make superficial dives, although the scientists managed to film a pyramid of almost 35 meters height (approx 115 feet) and to extract fossils embedded with animal fossils incapable of living at a depth of 700 meters.(2,300 feet).

This year's expedition does not look to prove the hypothesis of a sunken island.

"We think that this is no longer a hypothesis, it is a fact, supported by scientists who specialize in geology and archaeology", says the investigator.

"The existence of pyramidal structures deep underneath Cuban waters is very real. All that is only needed to gather the details."

Pyramids and buildings were captured by Paulina Zelitsky's equipment in 2000, showing that between Cuba and Yucatan lies a city submerged to more than 600 meters of depth with very geometrically cut, passages, tunnels and even **temples with diverse symbols** to a place where officially human beings never lived.

According to the investigators, these structures seem to be remains of streets, pyramidal buildings. Most of these blocks have gigantic dimensions, reaching to five meters of height and several tons of weight.

It has been confirmed that **the stones were cut, carved and polished to make them fit together with others and thus form greater structures.**

These constructions, the scientists agree, are megalithic, are aligned in symmetrical formations, well organized and, as if they were ordered and city-planned set on a "beach" of very fine crystal sediment, like sand. [emphasis added]

The article also says National Geographic was financing the trip and they expected to return in October-November 2006. However, according to a post from Linda Moulton Howe dated February 2005, the deal fell through:

<http://www.megalithic.co.uk/article.php?sid=2146410578>

Paulina Zelitsky ran out of money and National Geographic did not do a production contract. I talked with NG about 5 months ago and they confirmed they had not committed to the deep underwater megalithic structures for at least a year.

The last information I had was that Paulina Zelitsky was working on ships off Mexico for **She needed an estimated \$5 million to do robotic undersea drilling and photography.** Don't know when that will happen, but when it does, I'll report about it at Earthfiles and on radio.

Is there any possibility that this could be a natural formation? Not when you have actual inscriptions being found on the stones. This last article, translated from Spanish and based on an interview from March 26, 2004, reveals that the inscriptions are "very abundant" and "in all parts of the deposit!"

It also includes the reasons why such a disappointingly small amount of data has been recovered:

<http://www.s8int.com/water28.html>

by Luis Mariano Fernandez

...It has been confirmed that the stones were cut, carved and polished to make fit them together and thus to form greater structures.

Concerning the strange inscriptions, which are similar to Egyptian hieroglyphs, little is known except that they are very abundant and that they are in almost all parts of the deposit. There have appeared, as well, symbols and drawings whose meaning is not known.

Most of the big television networks are waiting for an opportunity to investigate this unprecedented material. Luckily, Paulina Zelitsky has permitted me an exclusive right - no other mass media has the material or has had access to the images recorded by the submarine camera...

The structures, that remind one of Egyptian pyramids, streets and other types of construction, are lying at more than 600 meters of depth **in an area of more than 20 square kilometers.**

Back to Iturralde, —Not only did he give me an interview but he took me to his home in the old part of Havana to show all the details to me, the data, the maps, the photographs, the sonar graphs, all he had accumulated in his investigation of three years on this sensational discovery.

This investigator, Manuel Iturralde, by the way, has offered very few interviews to the media. In fact, I believe that this one has been the first time that he received a Spanish or European journalist.

At the end of the interview and the visit at his home, he showed me the images recorded by a submarine camera of this "submerged city".

"No mass media or journalist has them, make good use of them", he said to me, looking frozen, perplexed. I will never be able to thank him enough.

These video recordings are being studied and analyzed by the Center of Marine Archaeology and Anthropology of the Cuban Academy of Sciences. The work of these scientists is centered on the symbols and inscriptions that appear on these stone monuments.

[He then interviews Paulina, who says the following:]

We were investigating the channel located between Cuba and the Yucatan Peninsula which is a very interesting area with different characteristics.

While making soundings of the bottom using sidescan radar we realized that we had covered a plain of thousands and thousands of meters covered with a very fine white sand, like silica, which was somewhat boring.

Thus we went like that for three or four days sweeping nothing else except that very fine desert sand. Suddenly we saw in our maps the appearance of very symmetrical structures that they were man made.

Within this clean sand area of silica **we had been totally scared, in a strange way, we thought in the beginning that perhaps we had come across submarine facilities of the United States or another very great world-wide power that could construct large structures in totally deserted areas...**

When we published news of this discovery for the first time the University of Veracruz was interested in our work as well as in the images that we had recorded of these structures on the bottom of the sea.

Specifically, the Institute of Anthropology of this University invited me to excavations that they were making on artifacts and ruins of the Olmec civilization.

When they saw those submarine images they found similarities and parallels with the structures found in those excavations that this Institute was carrying out.

Its interest also was peaked because the native **Olmecs** and other first civilizations all had a similar morphology that marked their arrival from an eastern continent.

It means this — that **they arrived from the direction of Cuba, and speculates that the city was destroyed and sank due to a great earthquake.**

The study of their symbols and alphabet indicates to us that they belonged to groups who survived. One of these groups arrived at the coast of Veracruz — those who are the Olmecs.

Others arrived in Central America and traveled to the Pacific coast, and these families of civilization of the Américas as we know it today because they distributed all their know

When these anthropologists saw the submarine images of this "city" and saw stone monoliths some symbols and inscriptions they identified with the Olmecs were very surprised.

(Paulina, is it a certainty there are pyramidal structures down there?)

Yes clearly, and I am going to demonstrate that to you. But there are many types and structures, not just pyramids.

There is even an enormous pedestal with a structure around it that could be a perfect solar clock. [emphasis added]

UNIQUE WHISTLEBLOWER TESTIMONY

Isn't it maddening that this story has not been made more public? If you do understand the game is really being played, then perhaps it will not come as much of a surprise, although frustrating. Richard C. Hoagland also privately interviewed Zelitsky and heard they had sphinx sculptures as well... and not just one or two of them.

So, we have pyramids, sphinxes, Stonehenge structures, and inscriptions everywhere you Almost all the footage is being held back... and one must wonder if Zelitsky and her associates signed a non-disclosure agreement in exchange for the large amounts of funding required for previous dives.

Here is some unique context that may shed additional light on the situation.

In October 1962, the US announced Russian Premier Khrushchev put missile installations on a Communist island within easy striking distance of the US. This almost led to a nuclear conflict you can read all about it as the "Cuban Missile Crisis."

It is a matter of public record that US submarines *intensely* searched for Soviet submarines around the Cuban coast.

Logic then dictates that a gigantic complex with pyramids, roads, buildings, Stonehenge formations, ancient-looking written inscriptions, et cetera — covering at least twenty square kilometers — would have been discovered.

It is highly unusual that such an epic discovery has had so much difficulty getting any publicity whatsoever... unless it *had already been found, before Zelitsky ever arrived there*, and

information is being deliberately withheld.

After this author appeared on Coast in August 2004, we were delighted to have a new whistleblower come forward. We'll call her "Cheryl" for the sake of naming an otherwise anonymous person.

Cheryl's testimony gives a unique perspective, so we'll let you hear it from her in her own words.

We pumped her for as much information as possible, and here is how it unfolded over the course of three different emails. The emphasis was added after-the-fact:

-----Original Message-----

Sent: Thursday, August 19, 2004 3:12 PM

To: David Wilcock

Subject: Atlantis off Cuba

I was just reading The Shift of Ages Ch.2 on the website. I came across the report of Atlantis being off the coast of Cuba and wanted to share information with you.

I was in the Navy and stationed at GITMO Bay in 1980-1981. At that time we were supplying ships that were off of the coast. **We were told they were mapping Atlantis.**

There were subs, seals, etc. all involved.

We were told that the city they had found was huge, with writings on walls, etc.

We had of course asked them how they knew it was Atlantis and their response was... "it was written on a wall in that place."

Just some information for you and your team. I don't know if there are any documents about this, however, because I considered a military mission I would assume that there would have to be.

-----Original Message-----

Sent: Thursday, August 19, 2004 11:54 PM

To: David Wilcock

Subject: Atlantis off Cuba

Greetings David,

First of all let me state that your website is fascinating. Thank you for the work you are doing.

Here is what I can remember. My MOS was shipserviceman, basically supply. **There were a lot of experimental ships coming in and out that we would prepare pallets of supplies for them.**

Only specific people with the proper classification would take it to the ships or come and pick it up. **We were not allowed to go near them.**

I never talked to anyone specifically... it was what the men that delivered the goods were telling the rest of us when they came back. (Disparaging, I know.)

However, at the time we figured they were full of it! So it was not really something that details would come out of a later type of thing.

I CAN tell you what I was told. Unfortunately I am afraid there is not much detail to it. It was easy to get drunk and talk when there were cook outs on the beach.

We were told that **the government had begun to map the area's off the coast of Cuba and had found this area was huge, with machines that were still operating somehow.**

They were mapping it out and studying it.

They did not want anyone to know about it until they had gotten all the information they could from it.

They had mentioned pyramids but not sphinx's. They said that there were all kinds of buildings and roads we could see in stone.

Like I said earlier we asked them how they knew it was Atlantis...their reply was "**It is written all over the map**" to me made no sense!

They had not mentioned crosses or anything else. Just that **it looked like this city went from coast to coast.** We were worried that Castro would try and claim it.

There are other events that occurred that you may be able to check on and verify that occurred during this same time.

One was the USS Pegasus...an experimental ship that was also a hydroplaning type. It was very operational and we heard out maneuvered jets easily.

Another was the USS Boeing that blew her boilers while in dock. Another was during a defense exercise a Russian submarine came up in the bay. No one knew that it was even there until they surfaced.

These are just a few things. I am sorry I cannot remember more, however I hadn't even thought about it in so many years and I was reading your website.

Maybe a freedom of information act request will open the case for you. Now that you are aware the government is looking about it for quite some time.

I am glad to know that it was not a bunch of bunk... now I owe that person an apology if I could only remember more. LOL Don't give up... if I know, there are others who know more!

I am sorry I could not be of more help!

——Original Message——

Sent: Friday, August 20, 2004 1:28 PM

To: David Wilcock

Subject: Re: Atlantis off Cuba

Hello David,

Wow! This is something that I will have to think about! I am not sure I can remember n
nothing more than a lowly peon at the time and really was not privy to classified inform

I only heard about this because we were loading the pallets and I hung out with the par
and Seabee's. Beach parties can cause loose tongues.

That is why I had never really taken it seriously because who would believe a drunk. LO

As far as what the military was doing during that time... good question. We DID have s
experimental ships and equipment that was being tested. However, the specifics, like
classified.

I WILL rack my brain to see if I can remember any more details about what was going o
be verified.

Like I said, we had ships in and out all the time. I remember mention of the U.S.S. Pega
kind of hydroplaning or hydrofoil type ship. In one of her test runs... during a defense e
easily out maneuvered our jets. Once again that is what I would consider rumor or hea
like the Atlantis claim.

The U.S.S. Boeing did blow her boilers right through birthing compartments and up the
while in dock. She had to be totally re-outfitted before she could get underway.

The Russian Submarine that surfaced inside the bay while the base was undergoing de
exercises did occur. However I don't think anyone would want that information out as i
speak highly of our defenses. LOL

As to the reason why it surfaced, I never heard. Maybe it could not maneuver due to th
of ships coming and going in the bay that they could not get out. No one knew it was t
a total shock and the base went into lock down!

I was usually in the warehouse or in the commissary when I was not partying. Young a
but nevertheless I am not sure that I can be of much more help.

Like I said, this is something that I will have to think long and hard about. To try and re
anything in more detail or names. It has been so long and like I said, most of what I he

considered scuttlebutt!

I just wanted to let someone know what I had heard about so many years ago.

Rumors about Atlantis have been around for many years, so until I read your website I had not given much credence to what was being said back then.

It was something that I felt was known throughout the base. **Everyone was talking about Atlantis being found off the coast. So much for classified information being kept secret.**

As for working machinery, **the theory that was being expounded was that these machines somehow were still running.**

What they did, no one knew. How they knew that they were still working, I can't say. However, there are people out there that know more than I do...of this I AM positive!!!

I will try and find more information as well on the net. Maybe something that can be verified there.

Until then, I will think about your offer and what if anything I can contribute. Of one thing I am sure, I DO want to keep my anonymity. If this information **is** Classified I don't need any clearance with the government. My son's career would depend on this.

It becomes quite clear, then, that we are seeing another possible confirmation that the ancients found out exactly what this Great Cycle of the Solar System would do — they experienced it firsthand in the sinking of their own continent.

Now that we are working with larger-scale financing as a result of the CONVERGENCE fund, we hope to be able to attract investors to fund and re-investigate this mystery. It may well be that Geographic has now voluntarily rescinded their rights to the exclusive story, which it appears to have largely buried.

We will soon see that de Santillana and Von Dechend in the book *Hamlet's Mill* showed that precessional numbers were encoded throughout almost all cultures on Earth, through many languages. We have also seen the Maya as possible inheritors of Atlantean calendrical cycles that they have charted out these Sunspot and precessional cycles.

And so, now that we have come to the end of this chapter, we can move directly ahead to the beginning of the book, where we will investigate the actual harmonic time cycles that are responsible for bringing this event about.

We will start by re-investigating the readings of Ra and Cayce for further details on the workings of this harmonic system of physics as it relates to cycles of time.